



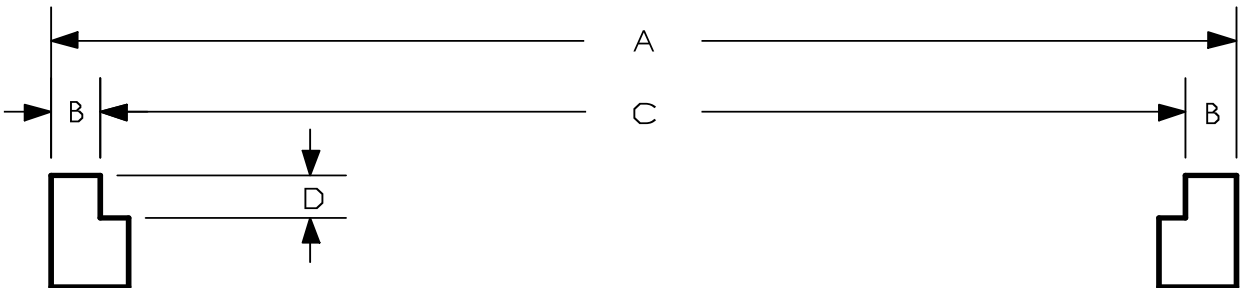
Summit Metal Products, Inc.  
 1351 Nagel Blvd.  
 Batavia, IL 60510  
 (630) 879-7008  
 (630) 879-8068 fax

# Specifications

Customer:  
 Company:  
 Project:  
 Location:

Fax:  
 Date:  
 PO#:  
 SMP#:

	LEVEL 1	LEVEL 2	LEVEL 3	LEVEL 4	LEVEL 5	LEVEL 6	LEVEL 7	LEVEL 8	LEVEL 9
RACK DEPTH									
A									
B									
C									
D									
BEAM LENGTH (CLEAR)									



Choose one of the conditions below:

- Condition 1 (Recommended): Summit will deduct 1/8" from C dimension. Published allowable uniform total loads are based on this situation.
- Condition 2: Summit will deduct 1/4" from C dimension. Applicable when there is variance in the rack beams causing the C dimension to be inconsistent. The C dimension variance must be less than 1/8".

Signature (required): \_\_\_\_\_ Date: \_\_\_\_\_

THANK YOU FOR YOUR BUSINESS

